

KHAO

canapés outdoor composables

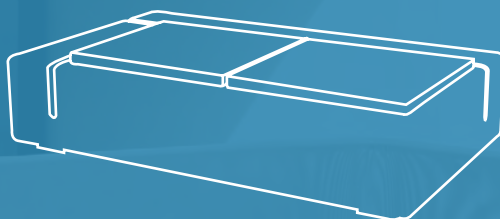




Table d'appoint **ronde**.

Canapé module droite et gauche, un module 1 place au centre.
Dossier bas et haut.



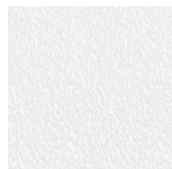
Composition linéaire avec dossier, **pot de fleurs au centre** et table encastrée.

Nuancier

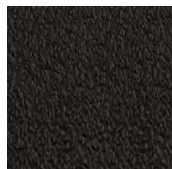
Résine de Polyéthylène

Fauteuils - Canapés - Tables basses

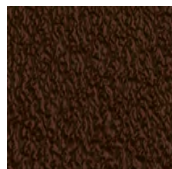
Résine de Polyéthylène à basse densité linéaire - Fabrication par roto-moulage - Résistance à la température : -60°C à +80°C - Résistance aux UV : 8000 heures facteur UV 8 - Résistant aux impacts - Poids léger - 100% recyclable.



Blanc
WHI



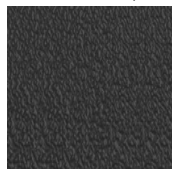
Noir
BLA



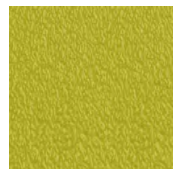
Bronze
BRO



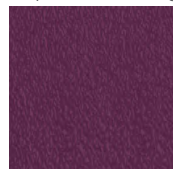
Argent
STE



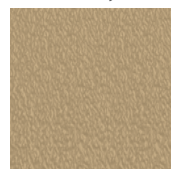
Anthracite
ANT



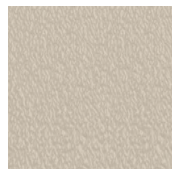
Pistache
PIS



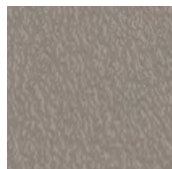
Violet
PLU



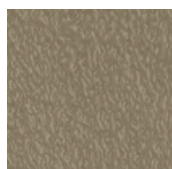
Beige
BEI



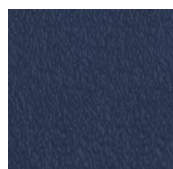
Écru
ECR



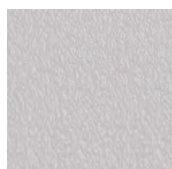
Taupe
TAU



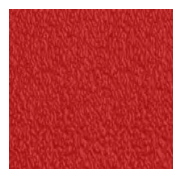
Kaki
KHA



Bleu
NAV



Glace
ICE



Rouge
RED

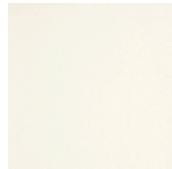


Orange
ORA

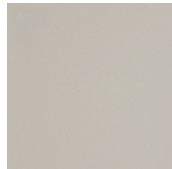
Vinyl

Coussins

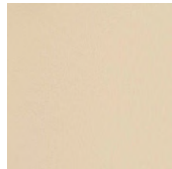
100% Polyester Hiloft - Poids : 780gr/m² - Résistance à l'abrasion : 120 000 cycles - Résistance au feu : EN 1021 (Part 1-2), M2 (NF P 92.507), BS 5852, DIN 53 438/T2 - Résistance à la température : -20°C - Résistance aux UV : 1000 heures facteur UV 7.



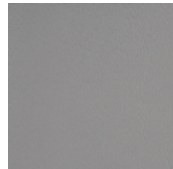
Blanc
3102



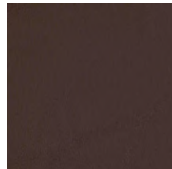
Écru
3111



Beige
3105



Gris
3112



Bronze
3120



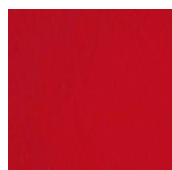
Noir
3126



Violet
3119



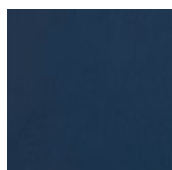
Pistache
0041



Rouge
3117



Orange
3115



Navy
3124

Descriptif technique

Canapés

Fabriqué en résine de polyéthylène par rotation moulée à double paroi.

100% recyclable.

Utilisation à l'intérieur et l'extérieur.

























Les dossiers et tables encastrés sont en acier inoxydable laqué avec peinture polyester. La surface du dossier est en tôle déployée.

Accessoires

Le pot de fleurs est fabriqué en résine de polyéthylène par rotation moulée à double paroi. Il est 100% recyclable et s'utilise à l'intérieur et l'extérieur.

Les tables d'appoints sont en acier inoxydable laqué avec peinture polyester. Le plateau est en tôle déployée.

Tarif

CANAPÉS					
	Module 1 place		L90 x P90 x H40 cm	64001 + 	854 € ^{HT}
	Module 2 places gauche		L150 x P90 x H40 cm	64002 + 	1397 € ^{HT}
	Module 2 places droite		L150 x P90 x H40 cm	64003 + 	
	Dossier	Dossier bas	L60 x P14 x H55 cm	64006 + 	371 € ^{HT}
		Dossier haut	L50 x P21 x H80 cm	64005 + 	540 € ^{HT}
	Table encastrée	Ronde	Ø40 x H31 cm	64010 + 	339 € ^{HT}
		Rectangulaire	L35 x P50 x H31 cm	64011 + 	
ACCESSOIRES					
	Pot de fleurs		L90 x P90 x H34 cm	64004A + 	653 € ^{HT}
	Table d'appoint	Ronde	Ø55 x H45 cm	64008 + 	617 € ^{HT}
			Ø40 x H45 cm	64007 + 	539 € ^{HT}
		Rectangulaire	L35 x P50 x H55 cm	64009 + 	464 € ^{HT}
	Coussin	L50 x P50 cm		64014 + 	107 € ^{HT}
		L60 x P60 cm		64015 + 	139 € ^{HT}