

VISIT 4 PIEDS

5
ans

GARANTIE

3
semaines

DÉLAIS

-0%

REMISE






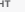

LIVRAISON

COMMANDE



Tarif




CHAISES - Pieds Noir (NO) ou Gris alu. (GA)

			Tissu cat. A	Tissu cat. B	Tissu cat. C
	Résille Noir	Sans accoudoirs	XS50A + 	XS50B + 	XS50C + 
		Avec accoudoirs	XS10A + 	XS10B + 	XS10C + 
			227 €^{HT}	248 €^{HT}	276 €^{HT}
			257 €^{HT}	278 €^{HT}	305 €^{HT}

Nuancier

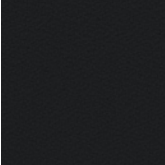








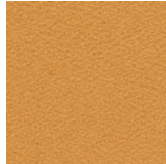

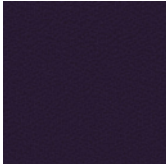

OMEGA - Catégorie A

76% polyester, 24% polyester recyclé - Poids : 413g/m.L - Résistance à l'abrasion : 80 000 cycles (test Martindale)
- Résistance à la lumière : 6 (ISO 105-B02) - Résistance au feu : Cigarette (EN 1021-1), allumette (EN 1021-2)

							
Nero A11	Brume A12	Glacier A13	Muscade A14	Blé A15	Lime A18	Baltique A19	Méditerranée A20
							
Monza A21	Ambre A22	Pétale A23	Olive A28	Paprika A29			

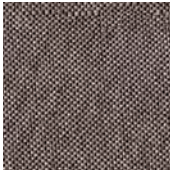
XTREME CS - Catégorie B

100% Trevira CS polyester retardateur de flamme - Poids : 434g/m.L - Résistance à l'abrasion : 60 000 cycles (test Martindale) - Résistance à la lumière : 6 (ISO 105-B02) - Résistance au feu : M1, B1, cigarette (EN 1021-1), allumette (EN 1021-2)

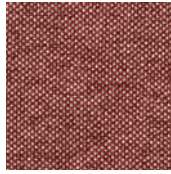
							
Havana B30	Blizzard B31	Grey B32	Tenom B34	Tonga B35	Maliki B36	Laga B37	Panama B38
							
Malang B39	Timor B40	Ruteng B42	Tarot B43	Tegal B45			

RIVET - Catégorie B

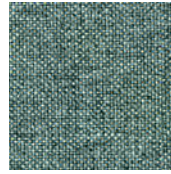
100% polyester - Ecolabel - Poids : 392 g/m.L - Résistance à l'abrasion : 80 000 cycles (test Martindale) Résistance à la lumière : 6 (ISO 105-B02) - Résistance au feu : cigarette (EN 1021-1), allumette (EN 1021-2)



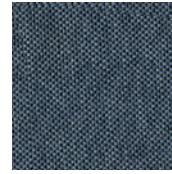
Woodrose
BA0



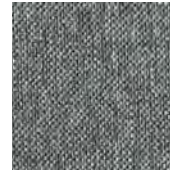
Forge
BA1



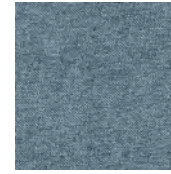
Verdigris
BA3



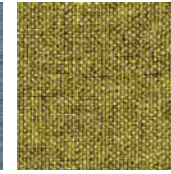
Lagoon
BA4



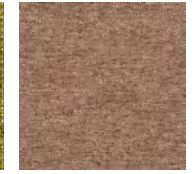
Galvanise
BA5



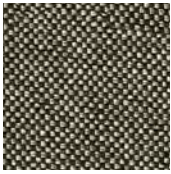
Quench
BA6



Spark
BA7



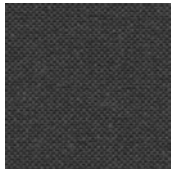
Molten
BA8



Twig
BA9

ACTIVECARE - Catégorie C

100 % Trevira CS Polyester Bioactive - Poids : 365g/m.L - Résistance à l'abrasion : 65 000 cycles (test Martindale) - Résistance à la lumière : 6 (ISO 105-B02) - Résistance au feu : M1, B1, cigarette (EN 1021-1), allumette (EN 1021-2)



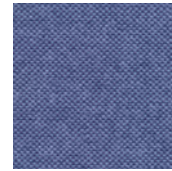
Shadow
C90



Caraïbes
C91



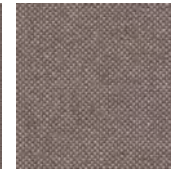
Prestige
C92



Horizon
C93



Terre
C94



Mocha
C95